



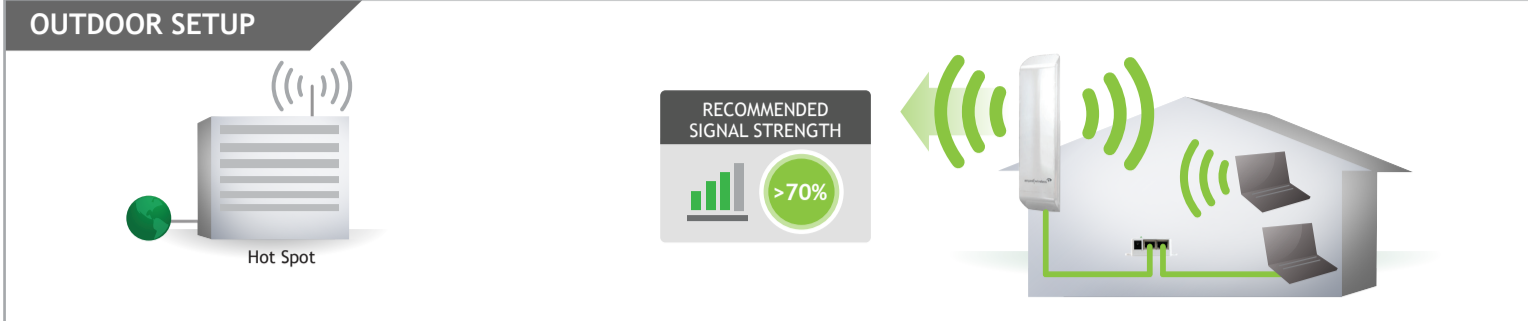
— READ FIRST —

High Power Wireless-N 600mW Pro Smart Repeater

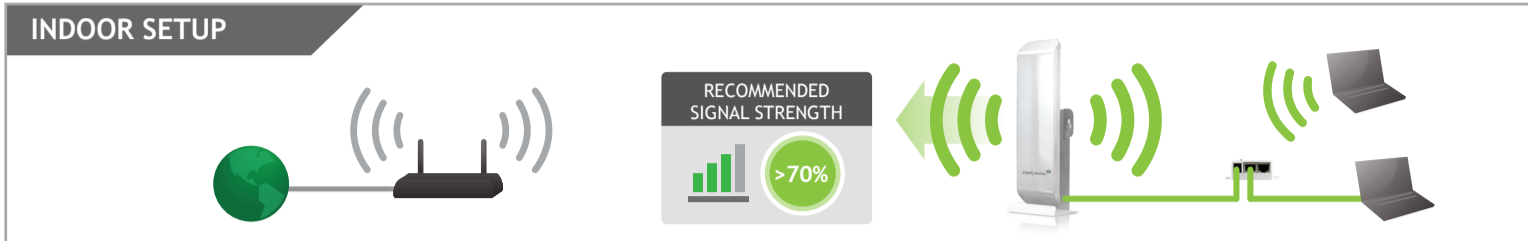
SR600EX

1 Find a location for installation

View the package insert for instructions on how to optimally position the Pro Smart Repeater.



See back side for mounting instructions.



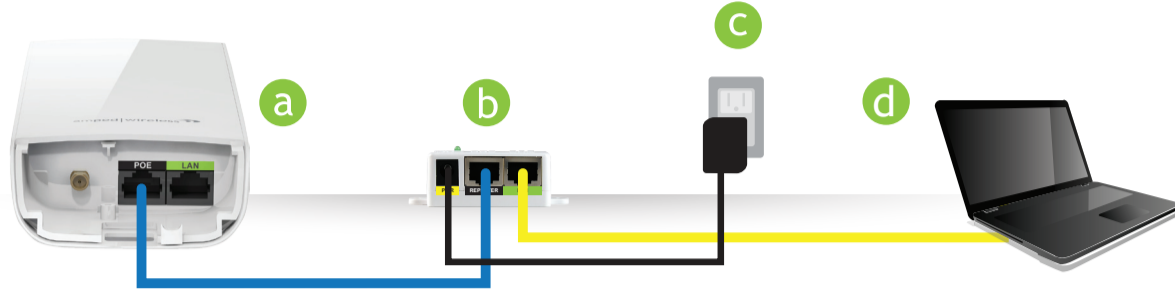
IMPORTANT:

>70%

PLACE THE PRO SMART REPEATER IN A LOCATION WHERE IT CAN RECEIVE A STRONG SIGNAL FROM YOUR WIRELESS ROUTER

This can be done before or after setup is complete. The Repeater will save your settings.

2 Hardware Connections



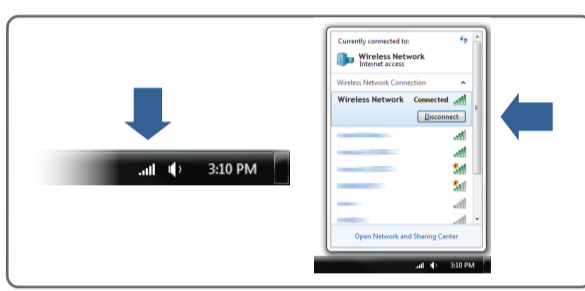
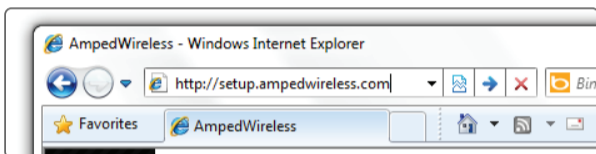
- a** Open the lid of the Pro Smart Repeater and check that the 30 ft PoE cable is securely fastened to the **POE** port.
- b** Locate the PoE Adapter and connect the 30 ft PoE cable to the **REPEATER** port on the PoE Adapter.
- c** Locate the power adapter and connect one end to a power outlet and the other end to the **POWER** port on the PoE adapter.
- d** Use the included network cable to connect your PC to the PoE adapter's **LAN** port.

3 Disconnect your PC from Wireless Networks and open your Web Browser

Windows 7 & Vista (Example)

Click on the Wireless icon to see available wireless networks (For Vista, click Start > Connect To). Select your current wireless network and click **Disconnect**.

Open your Web Browser



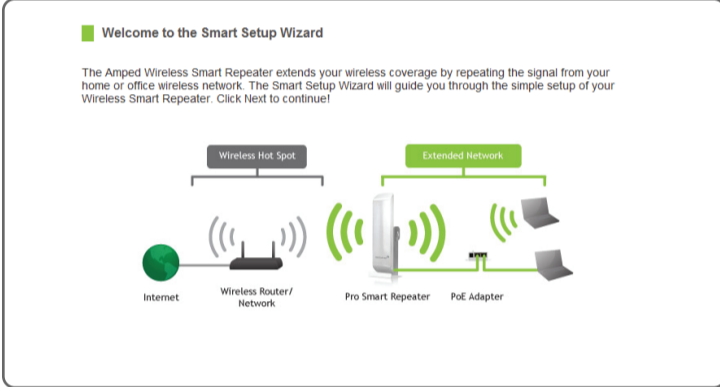
Enter the setup web address into your browser:

<http://setup.ampedwireless.com>

If the URL fails to open, then try: <http://192.168.1.240>

Note: Accessing the setup menu does not require Internet access

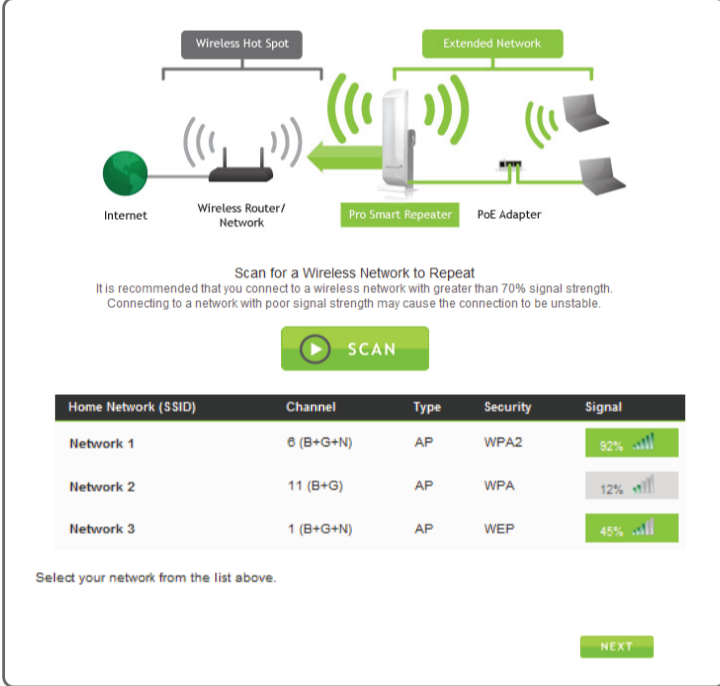
4 Welcome to the Smart Setup Wizard



The wizard will guide you through the setup of your Smart Repeater.

Click **Next** to begin.

5 Scan for a Wireless Network to Repeat



Click **Scan** to begin scanning for nearby wireless networks.

Highlight and select the wireless network that you wish to repeat.

>70%

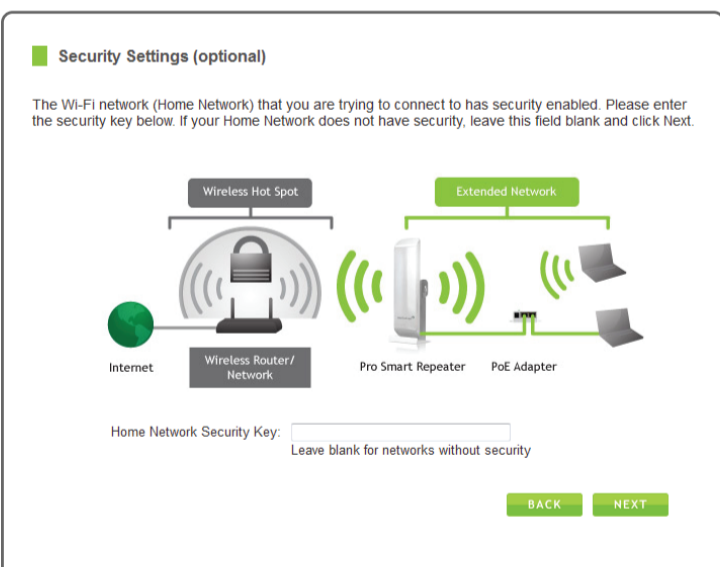
Recommended Signal

Select the wireless network with a signal strength greater than 70% for the most reliable connection. **Poor signal connections may cause slow speeds or dropped connections.**

Click **Next** to continue.

Note: If you do not see your desired wireless network, move the Pro Smart Repeater closer to the router and scan again as it may be out of range.

6 Home Network Security Settings (If necessary)

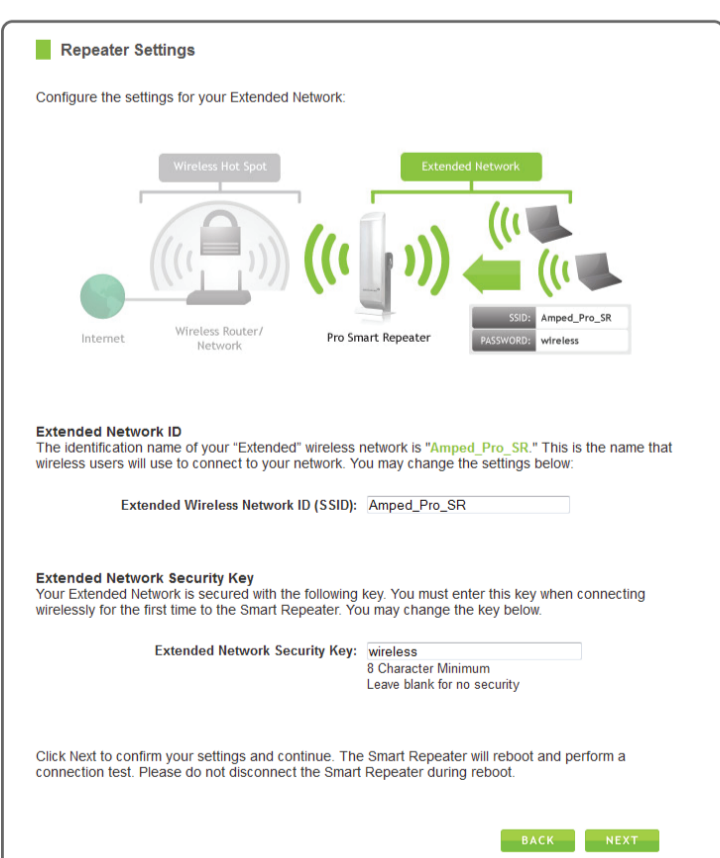


If your wireless home network has security enabled, you will need to enter the security code here.

If your wireless home network does not have security enabled, leave the security field blank.

Click **Next** to continue.

7 Configure Settings for your Extended Network



The ID of your Extended Network is: **Amped_Pro_SR**

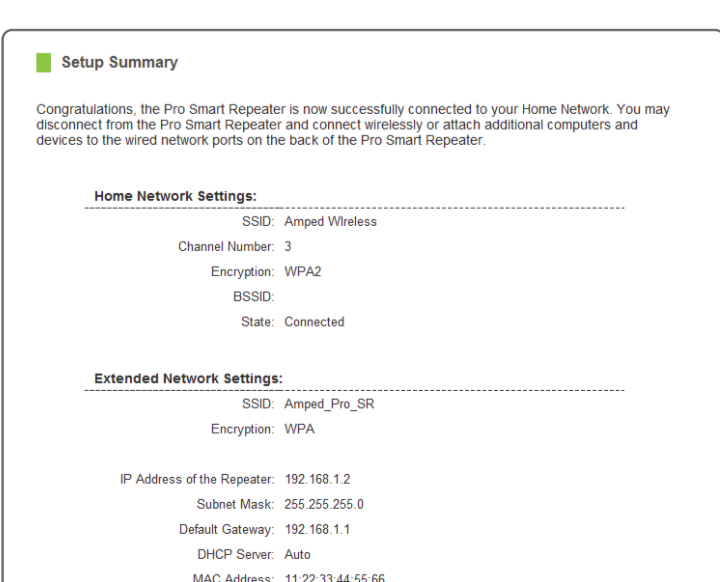
To change it, enter a new network in the SSID field. Users connecting wirelessly to the Pro Smart Repeater will use this ID to identify your Extended Network.

The default Security Key (WPA) of your Extended Network is: **wireless**

To change it, enter a new key in the Security Key field. The key must be at least 8 characters long.

Click **Next** to apply your settings. The Smart Repeater will reboot. This process may take up to 2 minutes. Do not refresh the web page. The page will automatically reload with the connection status.

8 Setup Summary



Congratulations, the Pro Smart Repeater is now successfully configured. Your settings are now saved. You may now detach the Ethernet cable from your computer and connect wirelessly to the Pro Smart Repeater.

If you haven't already positioned your Pro Smart Repeater in an optimal location, you may do so now. Your settings will be saved if the Pro Smart Repeater is powered off.

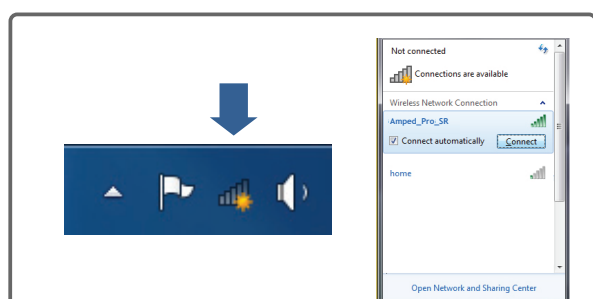
You may also attach any wired network devices you may have using the LAN ports on the Pro Smart Repeater and PoE Adapter.

If there was a problem with your configuration the Smart Setup Wizard will inform you of the possible problems. If you continue to experience problems, please contact Amped Wireless support department:

How to Connect your Wireless Computer to the Pro Smart Repeater:

Windows 7 & Vista

A. Click on the Wireless icon to see available wireless networks (For Vista, click Start > Connect To). Select the "Amped_Pro_SR" network and click **Connect**.

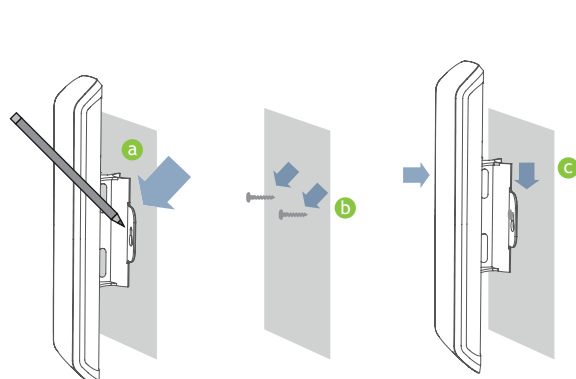


B. When prompted, enter the wireless security key "wireless" and click **OK**.



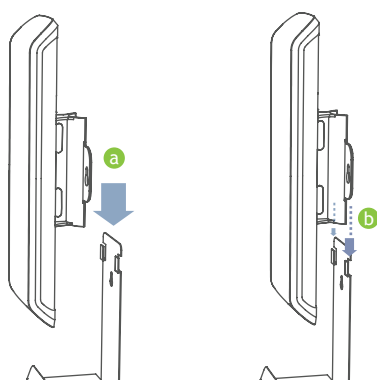
Mounting Instructions

WALL MOUNTING



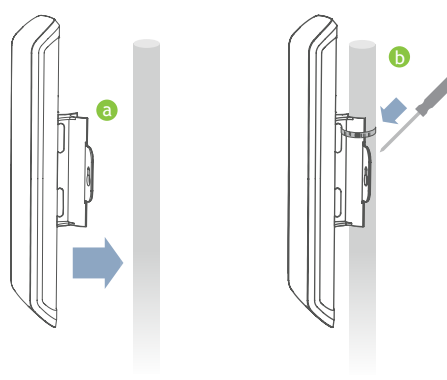
- Place the SR600EX against the wall, use a pencil and mark two pilot locations through the mounting hole on the wall.
- Remove the SR600EX and securely drill two screws where you have marked on the pilot location's wall.
- Now, mount the unit onto the secured screws.

DESKTOP MOUNTING



- Place the stand in an optimum location.
- Secure the SR600EX onto the desktop mount.

POLE MOUNTING



- Place the SR600EX against the pole.
- Use the included hose clamp or plastic tie and secure the SR600EX to the pole by inserting one side of the clamp through the smaller hole located on the bottom of the mounting bracket. If using the metal hose clamp, use a screw driver to fasten the clamp until the adapter is securely mounted.

Using an External Antenna

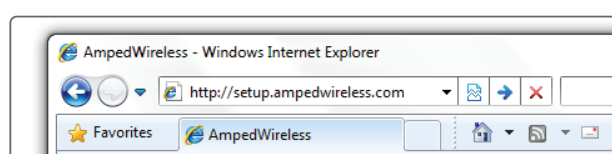
For additional range and coverage, the SR600EX comes with the option of using external antennas instead of the high power internal antenna. To use the external antenna, attach the antenna and log on to the web menu to activate the external antenna port:



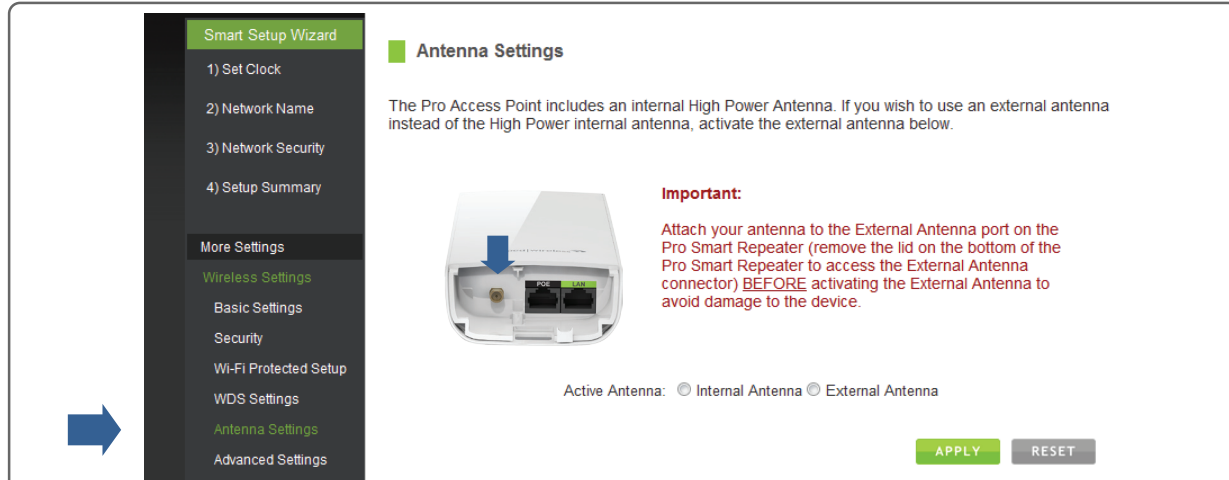
- Remove the lid covering the external antenna port and attach external antenna to the Pro Smart Repeater.
- Enter the setup web address into your web browser:

<http://setup.ampedwireless.com>

If the URL fails to open, then try: <http://192.168.1.240>

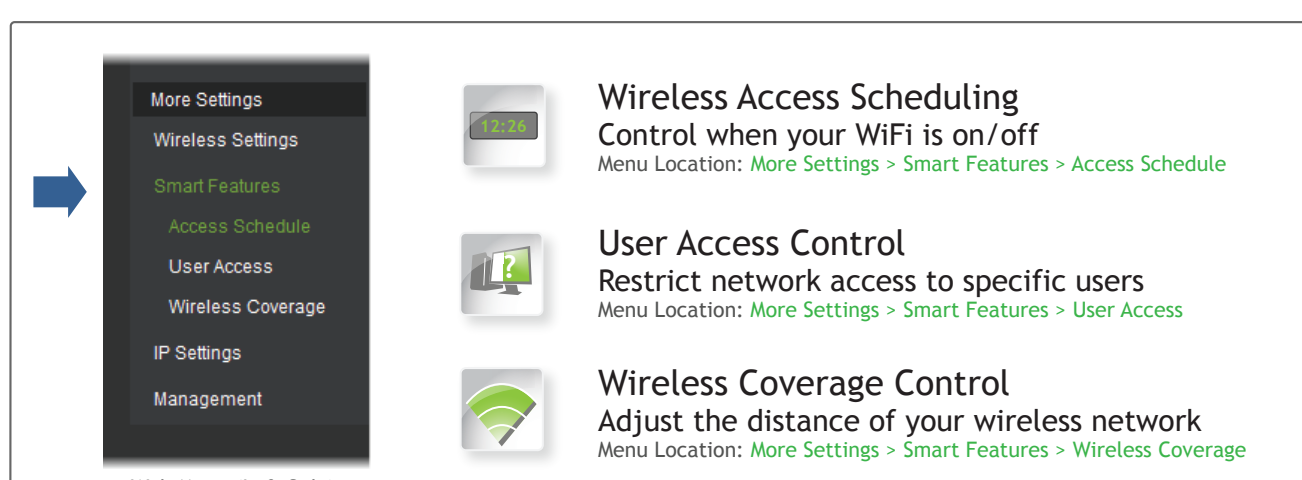


- Click on **More Settings**, then select **Wireless Settings**. Select **Antenna Settings** from the drop down menu. Check "External Antenna" to activate the external antenna and click **Apply**.



Using the Smart Features on the Pro Smart Repeater

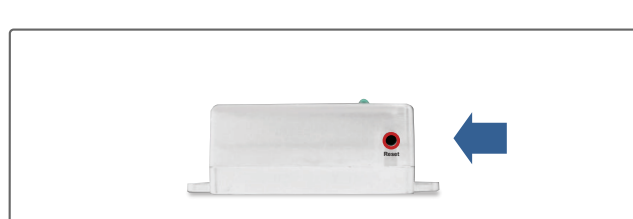
The Pro Smart Repeater is equipped with many powerful security features which can be accessed through the web menu under **Smart Features** on the left side of the web menu:



If you are unfamiliar or want more information on how to setup Smart Features, please refer to the User's Guide on the included CD.

How to Reset the Pro Smart Repeater to Default Settings

The Pro Smart Repeater can be reset to default settings by holding down the **Reset** button on the Power over Ethernet (PoE) Adapter for 5-10 seconds. To simply reboot the Pro Smart Repeater, press the **Reset** button for 1 second and release.



Note: Pro Smart Repeater must be connected to the PoE adapter for the Reset button to function.

Troubleshooting Tips

PROBLEM: I entered setup.ampedwireless.com and it failed to open the Web Menu.

- SOLUTIONS:**
- Make sure your computer is connected to the Pro Smart Repeater using the included Ethernet cable. Do not try to connect with a wireless connection. Ensure that the power on the Pro Smart Repeater is on.
 - Check that your computer IS NOT connected to any wireless networks. If it is, disable your WiFi connection disconnect from all wireless networks, power the Repeater on and off, and try again.
 - Close your current web browser and reopen it. Try the web address again.
 - Try to use a different web browser. We recommend the Google Chrome web browser.
 - Try to open your web browser to the default IP address by putting this number into your web browser instead: 192.168.1.240
 - Power off (unplug the power adapter) the Pro Smart Repeater and power it back on. Try again.
 - Reset your Pro Smart Repeater to default settings by holding the Reset Button (located on the back panel of the PoE Adapter) for ten (10) seconds and try again

PROBLEM: I cannot connect to my Home Network. I received an Error when running the Smart Setup Wizard.

- SOLUTIONS:**
- Your Home Network may be secured. Double check that you have the correct security key to connect to the Home Network.
 - Try adjusting the channel number of your Home Network's router to channel 5 thru 11. Then attempt the Smart Setup Wizard again.
 - Reboot your Home Network router and try to connect again using the Smart Setup Wizard.
 - Check to see that your Home Network router's DHCP server is enabled. The Smart Repeater needs to obtain an IP from your Home Network router.

PROBLEM: My Pro Smart Repeater was working fine previously but now I can no longer access the Internet through the Pro Smart Repeater. My Internet connection is intermittent and unstable.

- SOLUTIONS:**
- The connection to your Home Network has been dropped or the settings to your router have changed. This can be caused by several events to your home wireless connection, such as a power outage to your router. When this occurs, connect to the Pro Smart Repeater and access the setup menu web address: setup.ampedwireless.com Run through the Smart Setup Wizard to reconnect the Pro Repeater to your network.
 - If you cannot access the setup menu, check to see that your Smart Repeater is still on. Reboot the Smart Repeater by unplugging the power adapter and plugging it back in. Check to see if your connection has been reestablished by viewing a website. If you do not have a connection, logon to <http://setup.ampedwireless.com> and configure a new Home Network connection.
 - Using the setup menu (setup.ampedwireless.com) check to see that the signal strength between the Pro Smart Repeater and your home network is above 75%. The Pro Smart Repeater may be too far from your home router. To find the signal strength between the router and the Pro Smart Repeater you may check the Management > Repeater Status page on the web menu. On the bottom of the Home Wireless Network Settings section there will be a Signal Strength readout. This Signal Strength must be above 75%. If it is below, move the Pro Smart Repeater closer to your router, or reposition the Pro Smart Repeater.

If you continue to have issues setting up the Smart Repeater, give us a call were here to help: 888-573-8820